

nifty

TM34 TRAILER MOUNTED WORK PLATFORM



33ft 10in
Platform height

16ft 5in
Working outreach

**Fully Proportional
Hydraulic Controls**
Simple, reliable & easy to maintain

Bi-Energy Available
Optimizing utilization

Weight Saving Design
Easily towed &
maneuvered on site

**Hydraulic Outriggers
Available**
For quick & easy setup

Telescopic Axles
Access through double
doorway openings



niftylift.com

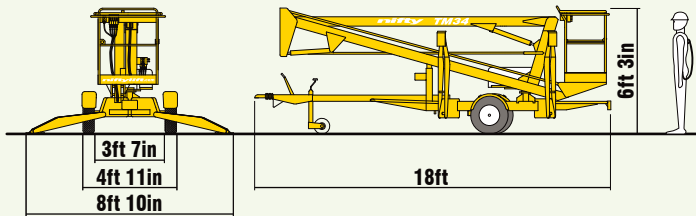
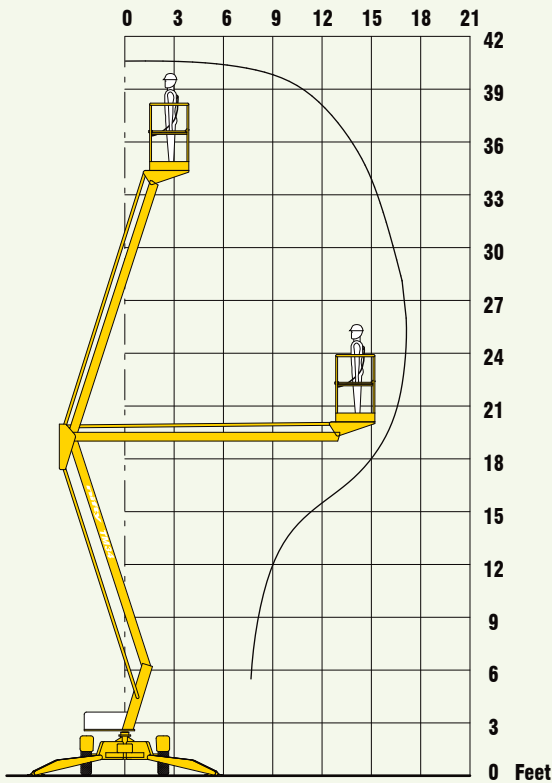


nifty™ TM34

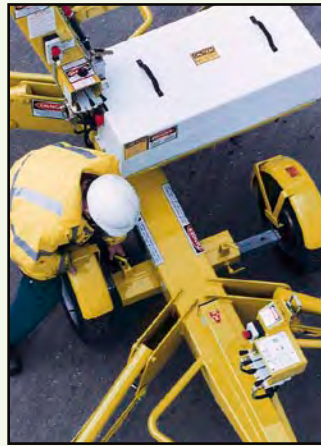
The Nifty **TM34** is one of the most robust and versatile trailer mounts available. Its telescopic axles allow it to pass through double doorway openings and setting up is simple with a choice of manual or hydraulic outriggers. Operation is quick and easy and its reliable hydraulic controls make it an ideal alternative to ladders and scaffolds.

SAFETY FEATURES

- Pressure Sensitive Outriggers
- Audible and Visible Alarms
- Manual Recovery with Hand Pump
- Dual Controls (Platform & Base)
- Lock Valves on all Hydraulic Cylinders
- Overrun Brakes with Gas Spring Hand Brake
- Dual Harness Points
- Meets OSHA and ANSI regulations



Due to a policy of continuing development and improvement, Niftylift reserves the right to change any specification without notice. Please confirm exact specification before ordering.



Retractable axles allow the **TM34** to pass through a 3ft 6in wide opening.



The **TM34's** manual outriggers are both cost effective and simple to set up.



To save time and energy when setting up, the **TM34** is also available with a hydraulic outrigger option.

SPECIFICATIONS

Working Height	40ft 5in	12.33m
Platform Height	33ft 10in	10.33m
Working Outreach	16ft 5in	5m
Slew	360°	
Width - Travelling	4ft 11in	1.50m
- Working	8ft 10in	2.70m
- Axles Retracted*	3ft 7in	1.10m
Height	6ft 3in	1.90m
Length	18ft	5.50m
Weight	2,560lbs*	1,160kg*
Platform Capacity	500lbs	225kg
Platform Size	3ft 8in x 2ft 1in	1.10m x 0.65m
Control System	Fully Proportional Hydraulic	
Power System	Mains Only	
	Battery Only	
	Gas or Diesel Only	
	Bi-Energy (Engine & Battery)	

* Weights may vary according to specification / power options, please confirm before ordering.

Supplied by:

NIFTYLIFT INC

32 Concourse Way,
Greer, SC 29650 USA
Sales: 1-800-NIFTYLIFT (800-643-8954)
Office: 1-877-MYNIFTY (877-696-4389)
Fax: 1-864-968-8836
e.mail: info@niftylift.com
www.niftylift.com

NIFTYLIFT LTD

Fingle Drive, Stonebridge
Milton Keynes, MK13 0ER
England, United Kingdom
Tel.: +44 (0)1908 223456
Fax.: +44 (0)1908 312733
e.mail: info@niftylift.com
www.niftylift.com